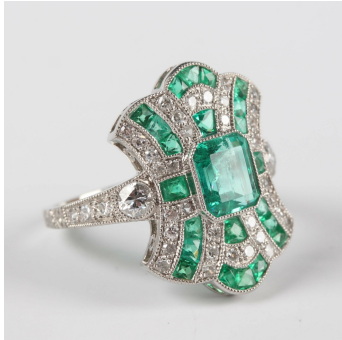


Jewellery / Wednesday, 6th August 2025 / Lot 615



LOT 615

A platinum, emerald and diamond panel shaped ring, mounted with the principal emerald cut emerald within a tapered rectangular surround, mounted with emeralds and diamonds, between diamond set shoulders, weight 5.6g, total emerald weight approx 1.11ct, total diamond weight approx 0.33ct, ring size approx M1/2, with a case.

Estimate: £2,800 - £3,200

Condition Report

The ring is modern, in as new condition.

The diamonds are single cut stones, the larger on each shoulder are round brilliant cuts.

The central emerald has a number of inclusions. The emeralds are likely to have been treated to enhance colour and clarity.

The ring is in platinum and has hand engraved markings to the interior of the shank '850 Plat E1.11 D23 0.3 0.7'

Created: Tue, 5th August 2025 10:49