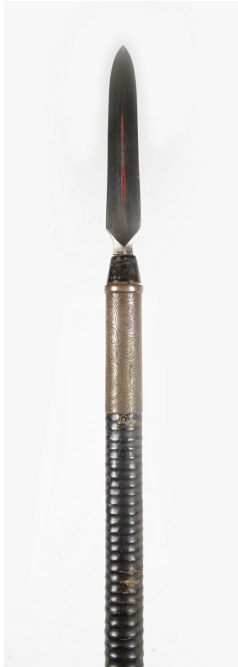


Single-Owner Collections / Thursday, 23rd April 2026 / Lot 4035



### LOT 4035

A Japanese su-yari, Edo period, with triangular-section steel head, head length 11.5cm, the face edge with narrow fuller, picked out with red lacquer, mounted on a full-length lacquered ribbed shaft with banded copper collars, decorated with trailing floral designs, and hirimaki terminal, overall length 218cm. Provenance: the collection of the late Roald Knutsen (1933-2025).

Estimate: £70 - £100

### Condition Report

4035. Blade/head has old rust evidence with light pitting/discolouration. Shaft generally has bruising and small losses to lacquer work along its full length.  
Hirimaki terminal has some active rust.

Created: Wed, 15th April 2026 14:11